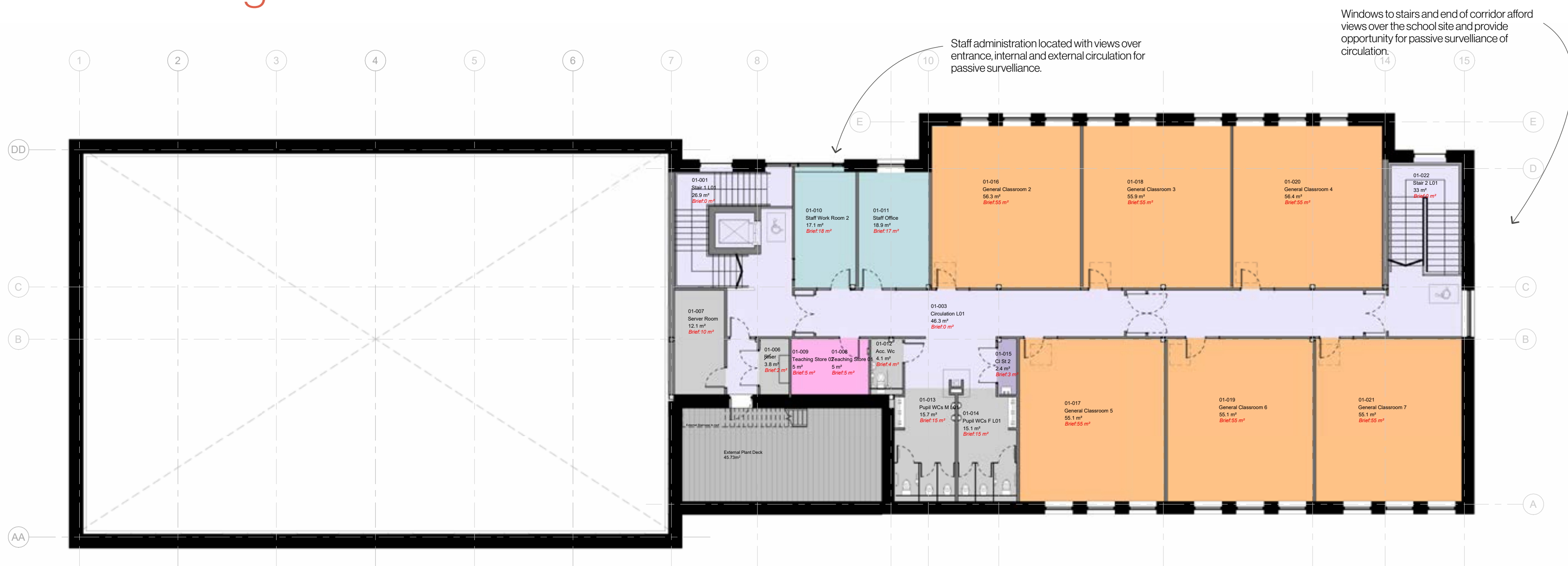
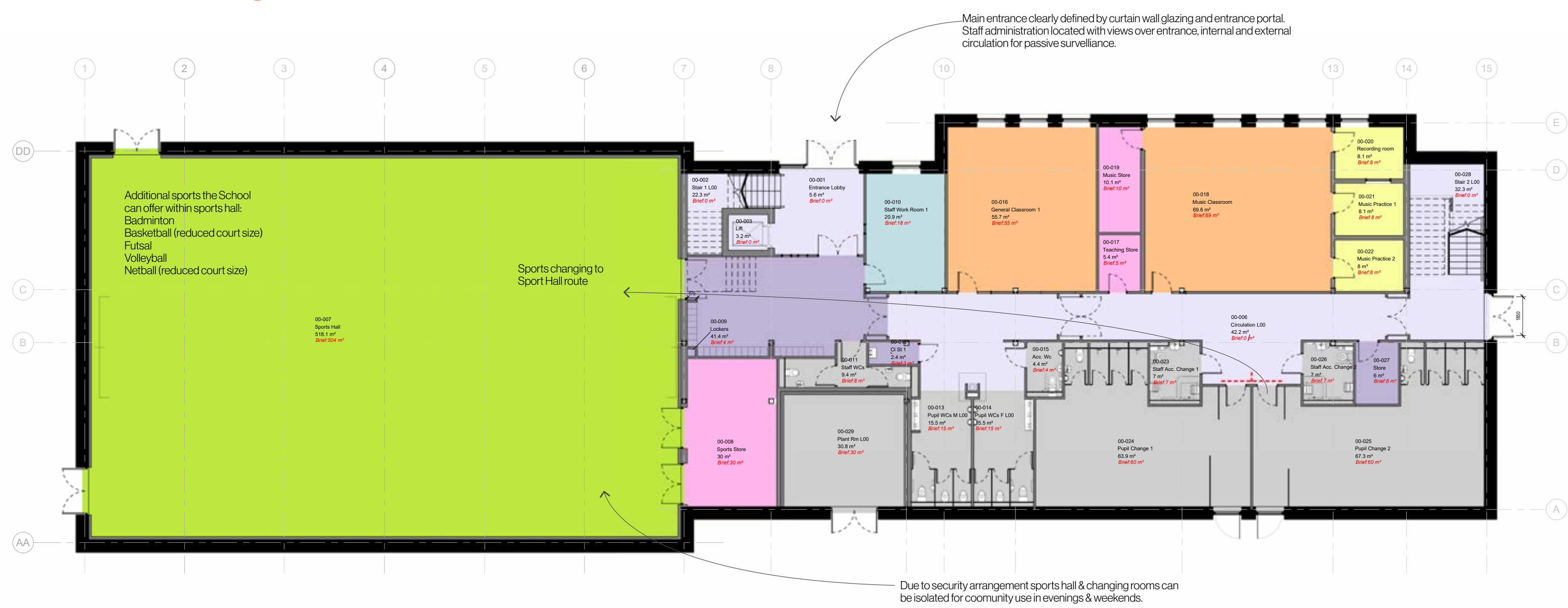


General Arrangement Plans - First Floor



General Arrangement Plans - Ground Floor



Visual Impact & Heritage

New Building location relationship with Broadlands House.

Recognising the significance for the former Aylestone House, being a Grade II listed building, the location, height, scale and visual impact of the new development needs to be carefully considered in the design process to ensure no detrimental impact to its setting.

The proposed location for the new block is set as far away as practically possible from the listed school house. This being some 5.5m lower in elevation due to the slope of the site. As the new block is set behind the existing main school block, only partial views will be possible through existing tree cover.



Grade II listed building: Broadlands House

