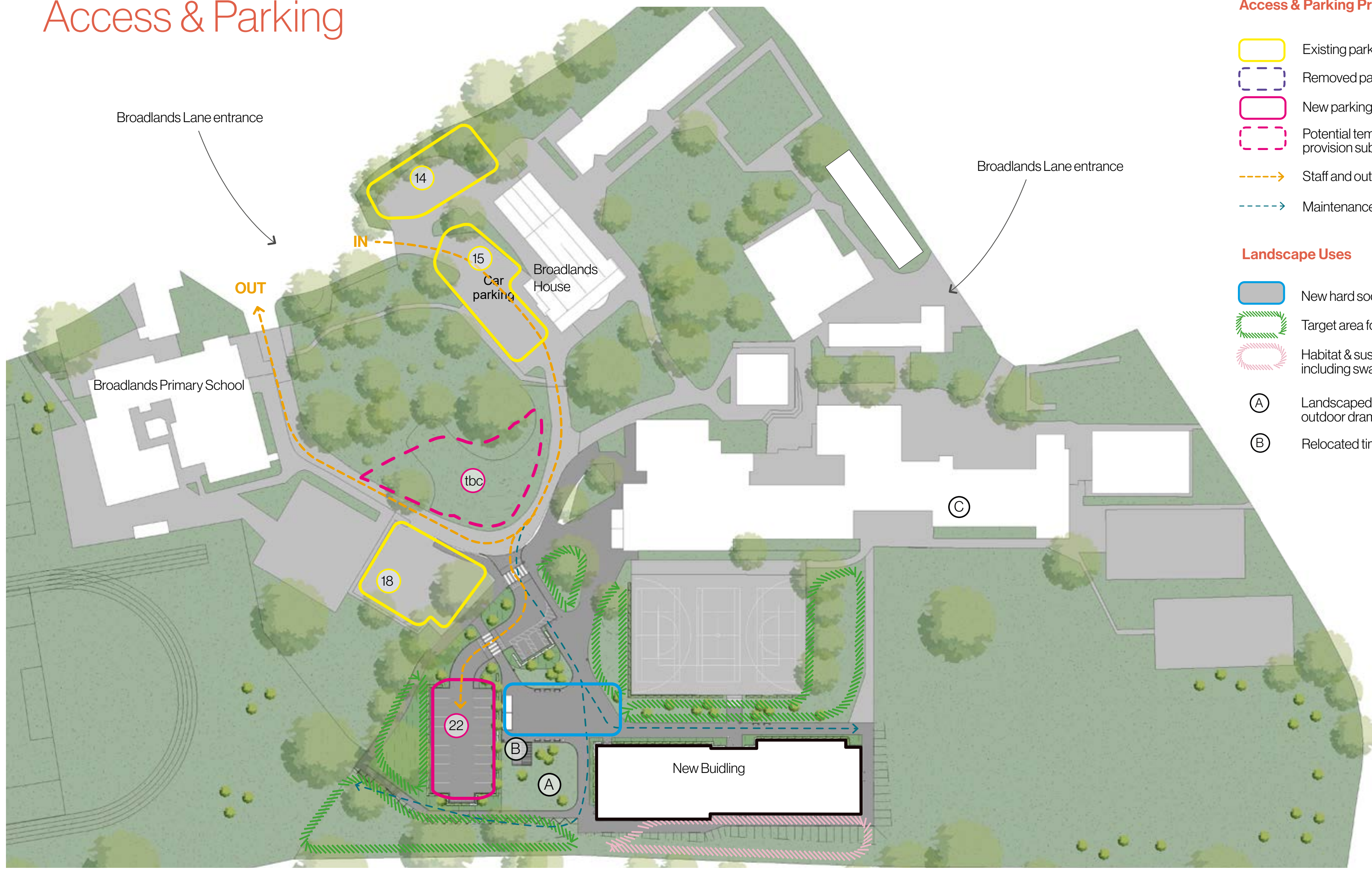


# Access & Parking



## Access & Parking Provision

- Existing parking retained - 47 spaces
- Removed parking - 17 spaces
- New parking - 28 spaces (NET GAIN 11)
- Potential temporary/ permanent parking provision subject to surveys and approval
- Staff and out of hours community use vehicles
- Maintenance vehicles & Fire Brigade access

## Landscape Uses

- New hard social spaces
- Target area for biodiversity net gain (BNG)
- Habitat & sustainable drainage features including swales & rain gardens
- (A) Landscaped steps- sport briefing area and outdoor drama
- (B) Relocated timber shelter

New pedestrian footway will be introduced connecting the New Building changing rooms and wider sports playing fields.

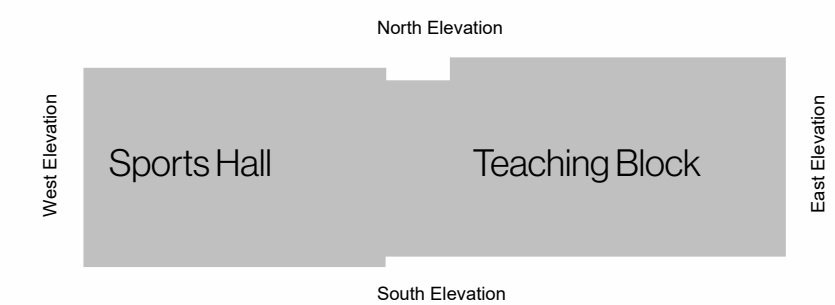
The New Building is surrounded by a continuous perimeter footway for student & maintenance access.

Swale/SUDS features to the rear of the site capture water run off and also contribute to improved Biodiversity Net Gain (BNG).

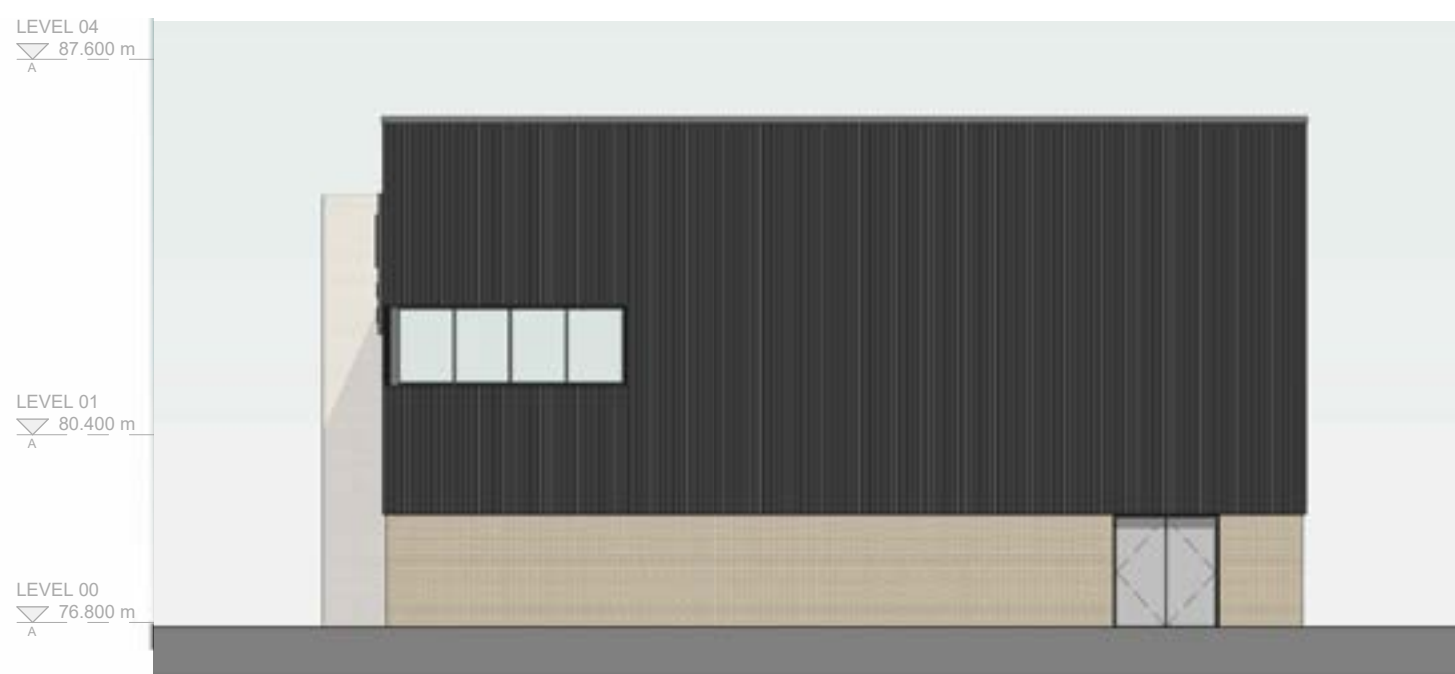
# New Building External Elevations

To offer robust materials and provide a material that sits in the context of the masonry buildings on the school site, the Teaching Wing of the building is constructed from a buff/grey masonry brickwork.

The large volume of the sports hall is constructed in sinusoidal textured black cladding at high level offering a distinct juxtaposition whilst echoing the many rural barn buildings found in Herefordshire.



Key plan



West Elevation



East Elevation

Windows to stairs and end of corridor afford views over the school site and provide opportunity for passive surveillance of circulation.



North Elevation

Windows at high level of Sports Hall to ensure exams can be sat in natural light. Windows positioned at high level above sports court wall fixtures such as basketball hoops. Windows on North and East walls only. No windows to South side of sports hall to minimise glare, overheating and harsh shadows.

Main entrance clearly defined by curtain wall glazing and entrance portal. Staff administration located with views over entrance, internal and external circulation for passive surveillance.



South Elevation

No windows to South side of sports hall to minimise glare, overheating and harsh shadows.

External Plant deck at first floor